

FirstNet FlashNotes

St. Luke's Hospital Emergency Department Chesterfield, Missouri

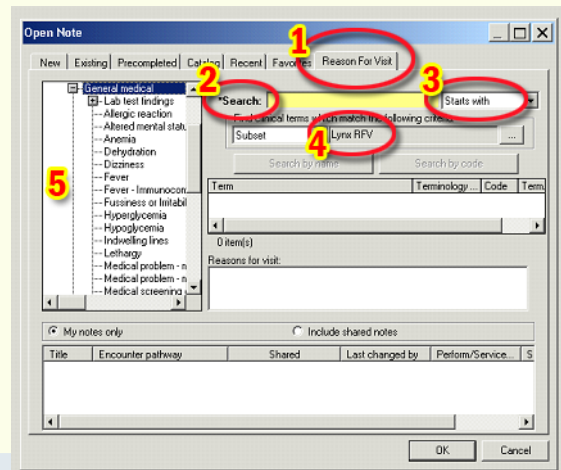
David Lickerman, MD, FACEP, Editor

#4
Sept 20, 2007

CHOOSING A REASON FOR VISIT

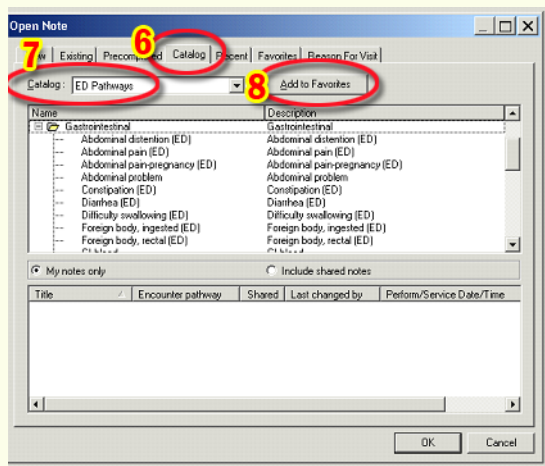
Choosing a Reason For Visit (RFV) that is linked to an “encounter pathway” opens an appropriate chart template in PowerNote. The easiest way to do this is to simply adopt the RFV chosen by the Triage Nurse (by clicking “OK.”) However, sometimes this RFV is not linked to an encounter pathway or you may see the patient before one is chosen by the nurse. There are many ways (actually five) to choose your own RFV. **Method number one:**

- Open the “Open Note” dialog box and choose Reason for Visit (1)
- Click in the Search box and type part of your search phrase (2)
- Make sure that the Search is set to “Contains” (3) and Lynx (4)
- Double-click the search result to move it into the Reason for Visit pane, then click “OK”



The second way to choose a RFV is by using the tree in the left pane (5). These RFVs will always be linked to an encounter pathway.

- Click the (+) sign preceding a category to expand the list.
- Double-click your choice of RFV to move it to the Reason for Visit pane,
- Click “OK” to open the encounter pathway in PowerNote.

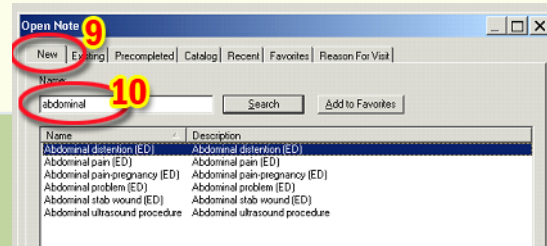


The third method of choosing a RFV is similar to the second. It uses the same categories, but they inhabit a larger pane

- Click to select the Catalog tab (6)
- Make sure the pane is set to ED Pathways (7)
- Click the (+) sign preceding a category title to expand the list
- If desired, you can click the button (8) to add this RFV to your list of Favorites.
- Double-click to select your RFV

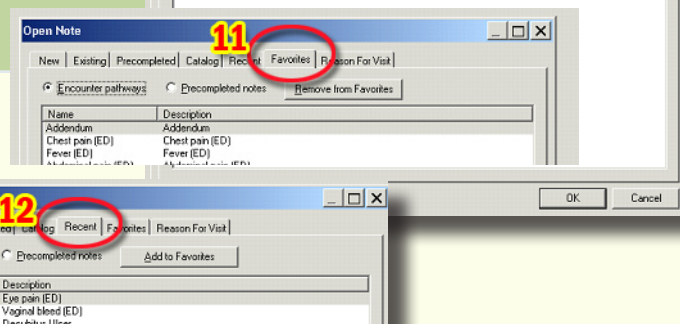
My favorite way to select a RFV is to use the “New” tab (9)

- Type part of your search phrase in the Search box (10)
- Click Search
- Double-click your choice from the list below to open your PowerNote.



Finally, you can use the Favorites (11) or Recent tabs (12) to choose a previously used RFV.

The advantage to these lists is that you do not have to search for a valid RFV.



MODIFYING A NOTE

Modifying a note is a quick way to insert an addendum into a signed note.

- Click the Docs tab (1)
- Double-click the Emergency Documentation folder (2)
- Click the [+] preceding ED Note Physician (2)
- Double-click the red square preceding the note's date (2)
- Right-click anywhere in the note that opens in the pane to the right. A new box containing the note will pop up. (3)
- Scroll to the bottom of the note where you will find the sentence "Add Addendum Note Here:" (4)
- Start typing. If no text appears on the line below, click on the line below (under the word "Add") and type.
- When you are finished, click "Sign" (5)

The screenshot illustrates the steps for modifying a note in the FirstNet system. It shows the patient information for Cindy Brady, the navigation tabs, and the specific note being modified. The context menu and the addendum insertion area are clearly marked with numbered callouts corresponding to the instructions.

Quick Detail Values:

When supplying order details, click once in the "Detail values" box (anywhere), then **type the first letters of the detail value rapidly** (e.g., "**mg**" or "**once**"). The detail value should appear without any further work on your part.

Click the next yellow line or the "Next" button to complete additional missing details.

THINGS YOU MIGHT LIKE TO KNOW

Ordering tips and program updates:

- Lower extremity venous Doppler is called "Venous Bilateral Extremity Duplex"
- Special procedures are all found under "Special" (arteriograms, LP, etc.)
- Can't find the final diagnosis of SBO in the ICD-9 codes? It is under "Intestinal Obstruction"
- In Patient Education, herniated disk is either "Cervical Radiculopathy" or "Lumbar Radiculopathy"
- "Call Psych Intake" has been added to the Altered Mental Status/Psych careset
- Ibuprofen 800 mg PO has been added to Common Medications
- ED IV Heparin careset has been fixed
- Panorex is now listed under Panorex
- Medications ordered outside of caresets are not necessarily set up for ED use. Examine details carefully. For most medications **Frequency** should be modified to "Once."
- It is acceptable to use the "other" category to free-text your diagnosis at the end of the encounter.
- In the next version of FirstNet, previously collected Past Medical History automatically populates the PMH.